

TOTO LINK
The Smartest Network Device

Quick Installation Guide

AC1200 Mini Dual Band Wireless Router

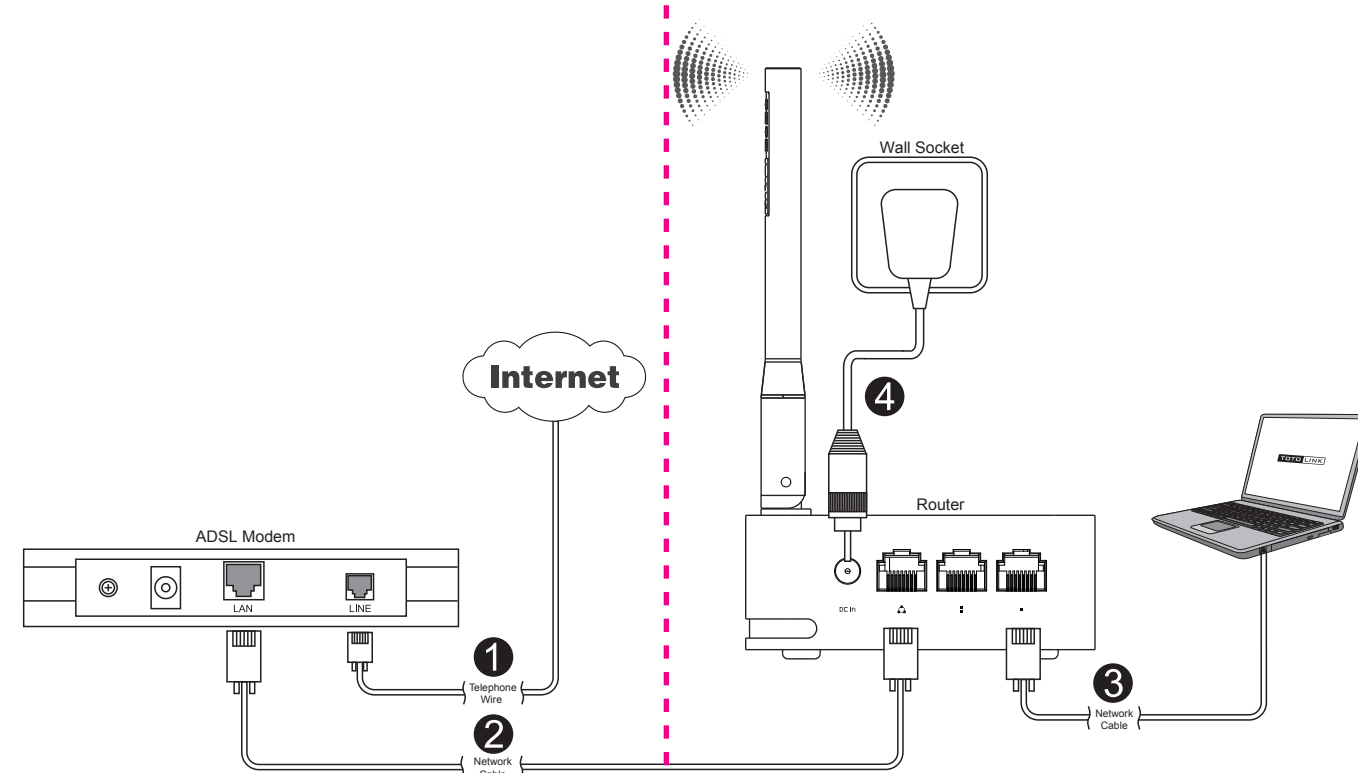
Model No. A3

V1.1701

Copyrights © TOTOLINK All rights reserved. Website: <http://www.totolink.net>
Information in this document is subject to change without prior notice.

1 Hardware Installation

If you access Internet by ADSL, please comply with step 1, 2, 3 and 4 in below diagram in correct order; if you access Internet by residential broadband, please comply with step 2, 3 and 4 to connect the WAN port of your router with the residential broadband directly.



LED Indicators	
POWER	Light on when router is power on.
CPU	Light is on when systems is working.
WiFi	The indicator light is on when Wi-Fi is enabled.
WAN	Light on when WAN port connected successfully. Light blinking while transmitting or receiving data.
1/2LAN	Light on when the LAN port successful connected. Light blinking while transmitting or receiving data.

Ports and Buttons Description	
DC IN	Used for connecting the power adapter.
1/2LAN	Used for connecting the router to local PC.
WAN	Used for connecting the router to the Internet.
WPS	Press the button for about 2 seconds, the WPS function enabled.
RST	Use a pin to press and hold the RST button until all LEDs turn off, the router will restore to factory default settings.

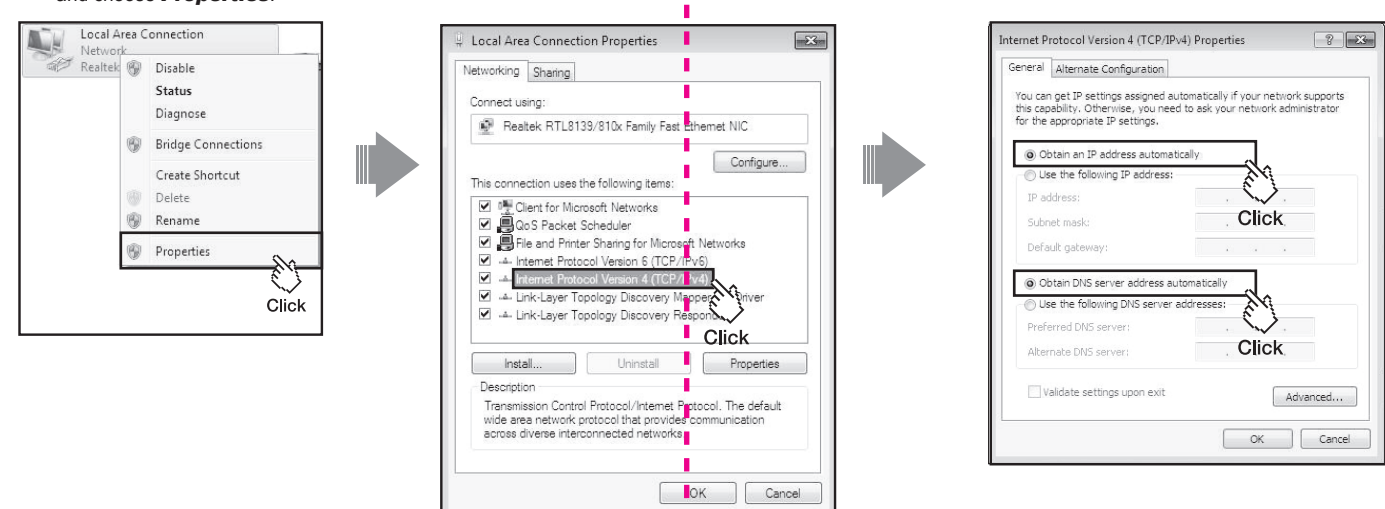
NOTE:

1. Please disconnect the power adapter and all cables during thunderstorm weather;
2. Keep away from heat source and keep well ventilated;
3. Please pay attention to the waterproofing and moisture-proof when storing, transporting and running.
4. The power adapter must be original or approved by TOTOLINK.
5. Put the router in flat places.

2 Set Up PC

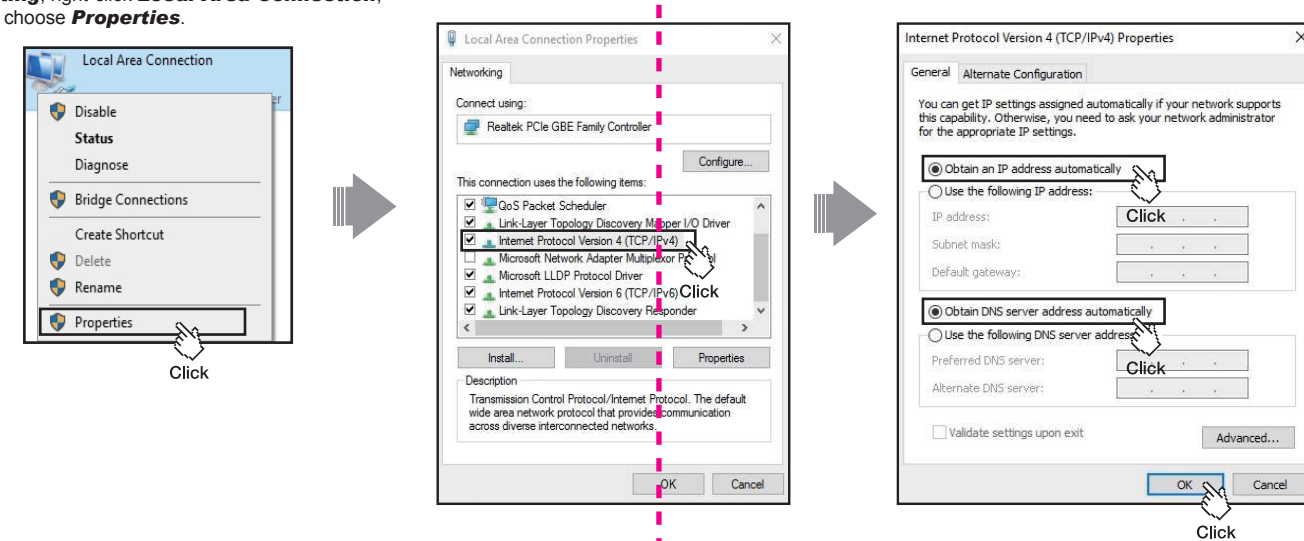
Windows Vista/7 For Windows Vista or Windows 7 Operating System, please comply with following steps to set up.

1. Click **Start—Control Panel—Network and Internet—Network Connection**, right-click **Local Area Connection**, and choose **Properties**.
2. Double-click **Internet Protocol Version 4 (TCP/IPv4)**.
3. Choose **Obtain an IP address automatically** and **Obtain DNS server address automatically**, click **OK**, and then click **OK**.



Windows 10 For Windows 10 Operating System, please comply with following steps to set up.

1. Click **Start—All apps—Windows System—Control Panel—Network and Sharing Center—Change adapter setting**, right-click **Local Area Connection**, and choose **Properties**.
2. Double-click **Internet Protocol Version 4 (TCP/IPv4)**.
3. Choose **Obtain an IP address automatically** and **Obtain DNS server address automatically**, click **OK**, and then click **OK**.



3 Set Up Router

Please set up the router following below steps.

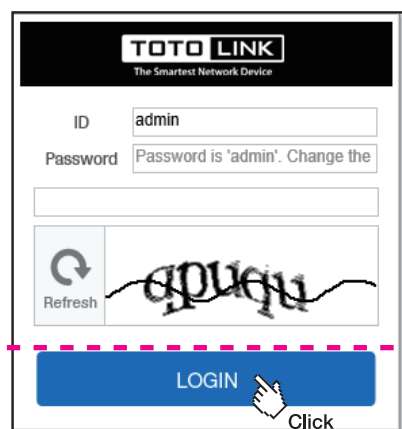
1. Run the Web browser.



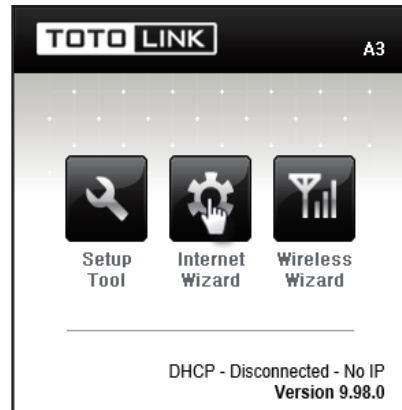
2. Type 192.168.0.1 in the Web Browser address bar, then press Enter key.

192.168.0.1

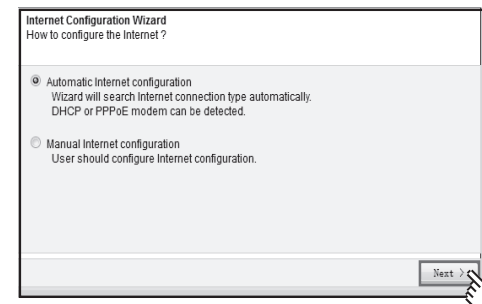
3. Enter correct ID, Password (both are admin in lower case) and verification code. Click **LOGIN**.



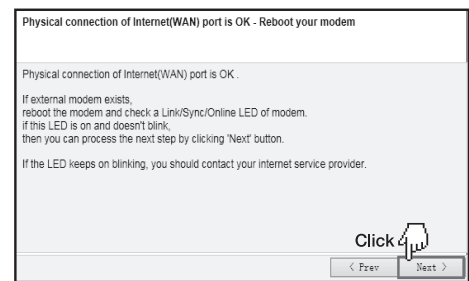
4. Below window shows up, first we click **Internet Wizard** to setup Internet information.



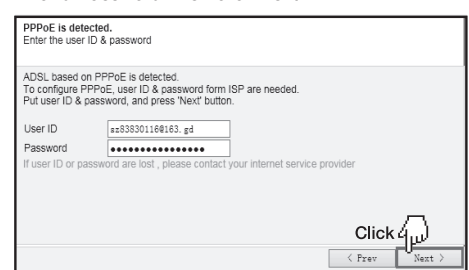
5. Two options provided, "Automatic internet configuration" is recommended, click **Next**.



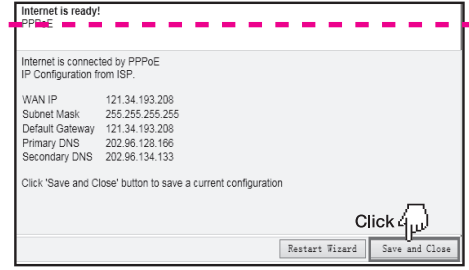
6. The router will detect whether the physical connection of internet (WAN) port is OK. Click **Next**.



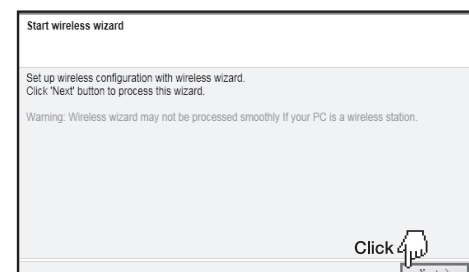
7. Wait for a while, PPPoE is detected, type in your User ID and Password. Then click **Next**.



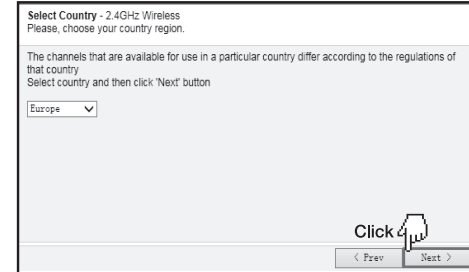
8. Click **Save and Close** to make settings work.



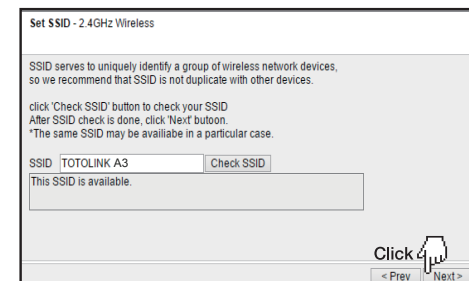
9. After Internet wizard, please click the **Wireless Wizard** icon to start wireless settings. Click **Next**.



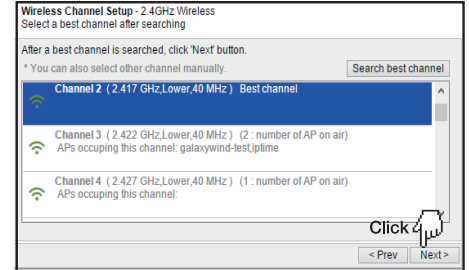
10. Choose your country region and click **Next**.



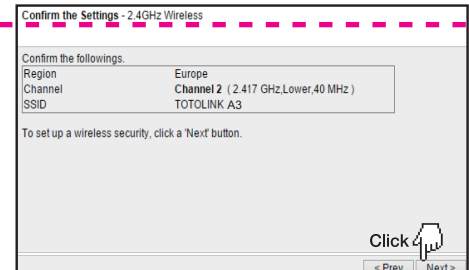
11. Click **Check SSID** to avoid SSID conflict, then click **Next** when it shows "This SSID is available."



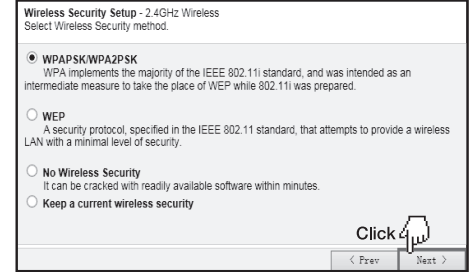
12. Choose the best channel, and click **Next**.



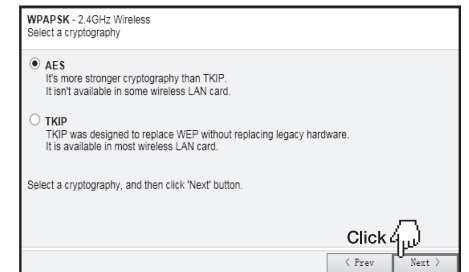
13. Click **Next** to go on to the settings.



14. Setup the encryption for your WiFi network, keep the default option. Click **Next**.



15. Select **TKIP** or **AES** cryptography, and then click **Next**.



4 FAQ

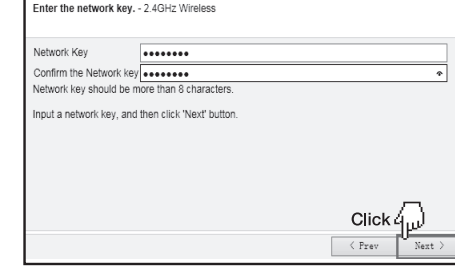
1. How to reset the router to default settings?

1. Please make sure your router's power is on regularly, then use a pin to press the RST button for about 5-8s.
2. Loosen the button until your router's LED lights all flashing, then you have reset your router to default settings.

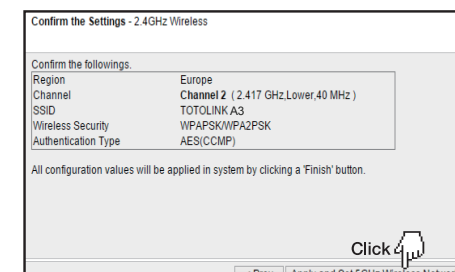
2. Forget the password?

Please reset your router to default settings firstly, and set a new password.
The default IP: **192.168.0.1**
The default ID: **admin**
The default Password: **admin**

16. Input the password (more than 8 characters).



17. Click "Apply and Set 5GHz Wireless Network" button to confirm the settings.



18. 5GHz wireless network wizard is similar with the settings of 2.4GHz, please refer to the process of 2.4GHz wireless settings.

NOTE:

Please keep your Wireless Network Key in mind or write it down in case you forget it and can't connect to the Wi-Fi.

If you forget your WiFi password, please press RST button to reset the device to factory default setting and re-configure the wireless parameters.